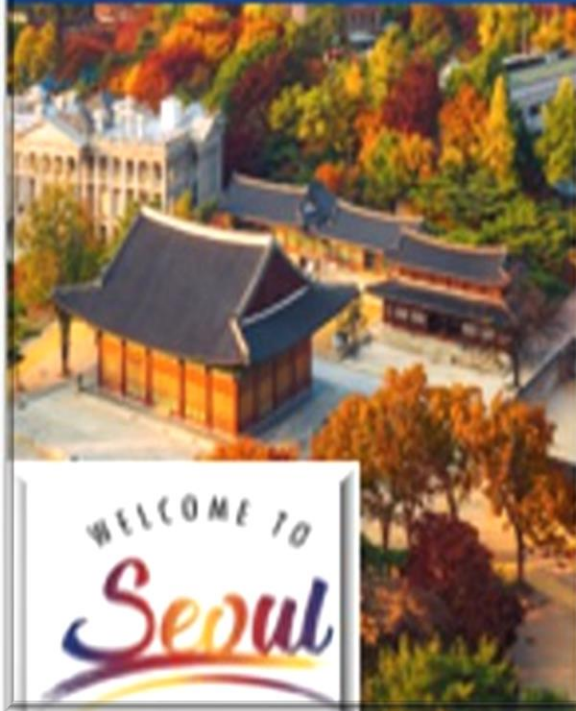


← **explorica** →  
by WorldStrides



# South Korea and Japan

*June 17 – June 26, 2025*

Join Matthew Haley and Jason Albrecht, in conjunction with Explorica by WorldStrides Student Travel, on a 14-day trip-of-a-lifetime to South Korea and Japan! For more information and complete details please visit us at [www.globalexpeditions.weebly.com](http://www.globalexpeditions.weebly.com)

## December 11, 2023 Meeting

\*Note – this trip is not affiliated with Moscow Middle School or the Moscow School District. It is an independent student/parent educational opportunity.

This presentation, additional information, and travel applications are located at:

***globalxpeditions.weebly.com***



**←explorica→**  
by WorldStrides

**Global Xpeditions**

# South Korea and Japan

*June 17 – June 26, 2025*

Join Matthew Haley and Jason Albrecht, in conjunction with Explorica by WorldStrides Student Travel, on a 11-day trip-of-a-lifetime to South Korea and Japan! For more information and complete details please visit us at [www.globalxpeditions.weebly.com](http://www.globalxpeditions.weebly.com)



# GlobalXpeditions

*Expanding your world view through international travel*

Moscow, Idaho – [globalxpeditions.weebly.com](http://globalxpeditions.weebly.com)



“like” us on

**facebook**

At “Globalxpeditions”



# Agenda for Tonight's Meeting

- Congratulations!
- So what have we signed up for? Show video
- What is Globalxpeditions (tour Facebook and website)
- Read emails and let us know if your account changes
- Safety
- Roles and Expectations
- Group educational travel 101
- Covid and Travel
- Covid FAQ's
- Who is traveling with us
- Introducing the travel leaders
- Passports
- Special accommodations
- What's included and not included
- Group assignments (reasons & signing up)
- Fundraising (both individual and group)
- Luggage, Phones, Debit Cards
- Holiday gift list
- Future meetings
- Questions and/or concerns
- Traveling parents meeting (5 min)



# Congratulations on being selected!!!

Now, let's start getting ready  
to travel!

Make sure all student travelers grabbed a poster from us and Explorica

First, ALL cell phones  
off please.

Thank you



# South Korea and Japan 2025 Promotional Video



# Now that you're signed up

## *YOUR Action Steps Prior to Next Fall*

- 1) Prepare and plan your Covid shot routine – You are expected be *up-to-date* with your covid shots
- 2) Add all travel meetings to your calendar: Copy provided
- 3) Select a date to update your passport (MUST BE VALID THROUGH THE END OF DECEMBER 2025)
- 4) Raise money and set financial goals
- 5) Start learning about South Korea and Japan





# FREQUENTLY ASKED QUESTIONS

- Are these travel dates guaranteed?
  - No, while we are 95% sure these dates are correct, our dates could shift one or two days either way depending on flight availability. We will not know our final dates until about 110 days prior to departure.
  
- Are we guaranteed to fly out of the Spokane Airport?
  - No, flight options might change our departure gateway. No matter where we fly in and out of however, Explorica will bus us to the correct airport at no additional expense to our group. We will not know our final departure gateway until about 110 days prior to departure.
  
- Can I "go ahead" or "stay behind" on this tour?
  - No, due to recent travel issues and the chaos, it causes the rest of the group and the individual travelers, there will be no deviations to the group itineraries. We will depart MMS together and return to MMS together.
  
- Are all items in the current itinerary “guaranteed” as part of this trip?
  - We aim to deliver all the items shared on the flyer. With that said, nothing in travel is guaranteed due to the ever-changing and evolving travel landscape. We will let you know of changes as we become aware of them. Some changes may also occur while on tour and might be unforeseeable. Know our goal is to provide the tour pitched, but we expect all travelers to be flexible when things change.

# What is Globalxpeditions?



# What is Explorica?







➤ It is very important to make sure you read all emails that relate to this trip

➤ Please notify us of email address changes or if you have additional ones to add to our list



➤ All traveling students should have an active email and check it regularly

➤ Action Required vs. No Action Required

➤ When emails are sent out, and action is required, read them thoroughly and respond promptly (within 48 hrs)





# **Safety**matters

- Explorica, State Department, CDC
  - Matthew and Jason don't decide when it is safe to travel ... we have a network of experts.
- Is it safe to travel now? We will re-evaluate every trip IF something arises in that area, region, etc.
- Seen it before...Japan and Tsunami, China and North Korea issues, France and train strikes, Turkey and security issues, Covid 19 pandemic.
- What happens if a new Covid surge arises
  - What if the trip cancels again?
  - What if...



# How has Covid changed our trips?



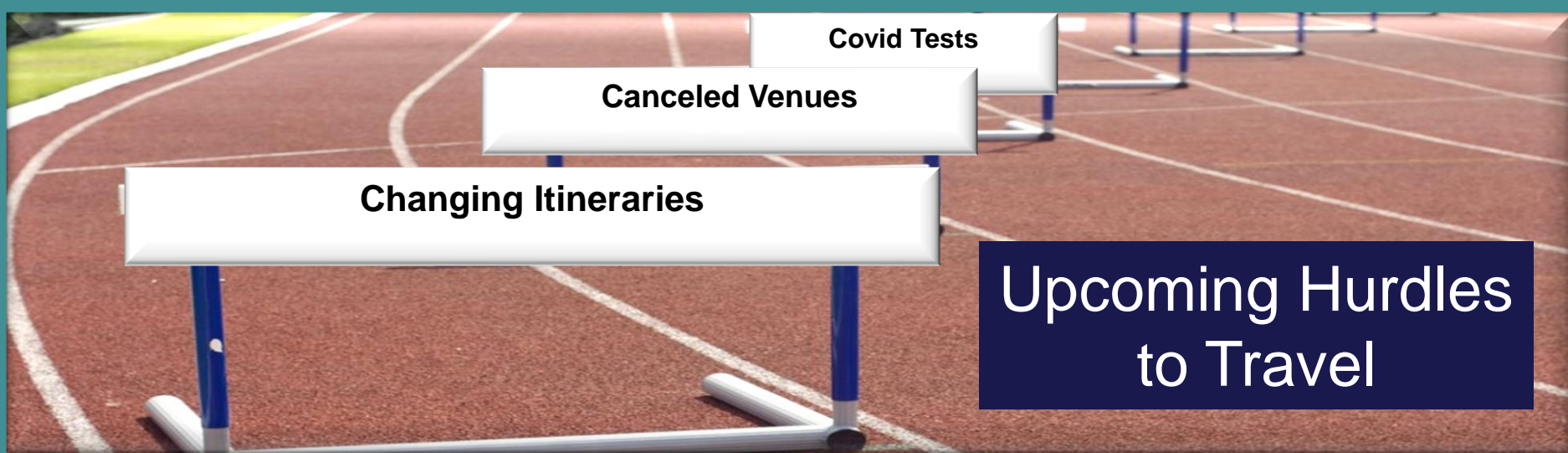
## Travel in the age of Covid



**Flexibility and adaptability** are KEY for all international travel

- Full vaccinations from Covid 19: You are to be considered “Up-to-date” in your vacation status
- Masks, spacing, and traveling/rooming in pods are possible
- Passports are taking longer to get You should have them by now
- Countries are adding new entry requirements ... it looks like we will have some for this trip
- **Note:** ALL OF THESE MAY CHANGE BEFORE WE TRAVEL ... so be FLEXIBLE





These hurdles are coming, we need to embrace:

- “Hurry up and wait” - We will have very busy and very slow times ... Be ready
- “Rolling with the punches” - When you are tired, stressed, and annoyed, you need to still be a GREAT teammate!
- “We are in this together! We are a travel family!”
  - Each part/choice/action that a person makes will impact everyone.”
- Remember we are lucky to travel ... Be ready for anything



# Traveler Roles and Expectations



- We only take the best of the best ... Expect to sign a Rules and Roles form prior to travel but understand the commitment you are making now!

# Educational Group travel Reminders

- **Flexibility:** Each part/choice/action impacts everyone
- **Patience :** This trip will only work if everyone thinks "We" not "Me" mentality
- **Cooperation:** We are in this together- We are travel family
- **Following the lead of your Tour Leaders:**



# 2025 Travelers

## Group Leaders : 5

Albrecht	Jason	Group Leader
Albrecht	Stacy	Group Leader
Haley	Daniel	Group Leader
Haley	Matthew	Group Leader
Lawrence	Sara	Group Leader

Students: 30

## Adults: 9

Ramirose	Attebury
Cara	Haley
Jon	Hegglund
Meghan	Lonneker
Samantha	Martinet
Gabriel	Potirniche
Sueanne	Ramella
Amberlyn	Reisenauer
Holly	Steele

2:1 one student to adult ratio

Dorris	Attebury
Mabel	Brewick
Lillian	Camin
Ella Mae	Chacon
Ivy	Deaton
Jaycee	Dunlap
Kirra	Dunlap
Audrey	Falcy
Kadence	Haley
Phoebe	Haley
Coco	Harlow
Oscar	Hegglund
Soren	Hohenlohe
Solveig	Hunter
Mackenzie	Kriebel
Jane	Lawrence
Lena	Lonneker
Asher	Mitchell
Walker	Morris
Morgan	Parks
Joshua	Potirniche
Declan	Ricker
Abigail	Snow
Dash	Spellman
Helen	Spencer
Kian	Steele
Josie	Tate
Rose	Ting
John	Turpin
Lauren	Venzke



**Trip Leaders:** Jason Albrecht, Matthew Haley,  
Stacy Albrecht, Daniel Haley, and Sara Lawrence



**Student Applicants – trip focus**  
**Adult Applicants – supporting role**



# Passports & Emergency Contact Information



Make sure you have a passport and that it is good up through the end of December 2025 (6 months past the travel dates)

Also...we will have you provide us with an updated medical and contact sheet when we get closer to the travel date



# Special Accommodations to Explorica

- **Dietary Needs** — Let us know and we will pass it on to our representative at Explorica
- **Rooming Needs** — Adult Single Room (Call Explorica for pricing)
- **Medical Issues-** Let us know if there are any medical issues to share at this time.



# What is included?

- Round trip airfare from Spokane (most likely)
- Lodging in Hotels
  - Students: 3 to 4 per room depending on location (students with students)
  - Adults: 2 per room (adults with adults)
- Transportation throughout the trip from MMS back to MMS
- Explorica tour director(s) to guide us on the ground
- Breakfast and dinner daily
- Guided sightseeing/walking tours
- Entrance fees to selected attractions



# What is not included?

- \$50 for two pre-trip team building activities
- \$100 for gratuities for the Tour Directors
- Lunches, beverages, and snacks throughout the day
- Passport and Visa fees
- Covid tests as needed
- Souvenirs
- Additional airline baggage fees
- Phone calls and Wi-Fi Access
- Any additional country entrance fees/visas
- We recommend \$500 for additional expenses on tour (souvenirs, lunches, etc.)





# Group Sign-ups



44 Travelers

Jason  
&  
Stacy  
20

Planes

Matt  
&  
Daniel  
20

Jason  
10

Stacy  
10

Daniel  
10

Matt  
10

Counting, Travel Sites, Etc.

Hotel Groupings ... 1,2,3,4, or 5 ??

Why: Needed for times when 44 people can't all be at the same place or on the same plane.

How: We will be asking for your suggestions and will set groups based on that and group necessities ... (parent/kid groupings and division of boys and girls to assist with later rooming assignments).

# Travel Group Preferences

- Please write down three people that you would enjoy traveling with while abroad
- We will do our best to honor these requests but WILL NOT guarantee anything
- While abroad ... BE FLEXIBLE!
- All adults will group with their child

-----  
I, (Print your first and last name) \_\_\_\_\_, would like to travel with the following three people; they are listed below in order of preference.

(Note: Please do not feel like you need to preference three people or anyone at all. Three is the maximum amount of people you can preference, but there is no minimum. If you do not have a preference, please check the box at the bottom that indicates that and we will automatically place you in a group).

- 1) \_\_\_\_\_
- 2) \_\_\_\_\_
- 3) \_\_\_\_\_

I do not have a group preference!



# Fundraising



- We are committed to helping you meet your fundraising goals!
  - Four full-group fundraisers (earn your spending \$\$\$)
    - You keep what you earn
    - We support Local NW companies
    - Money raised can be used to pay your balance or can be saved for your spending cash
    - Disclaimer: *Donations are NOT tax deductible*

1) Valentine's Day sale  
Moscow Candy Co.



2) Mother's day fundraiser  
Orchard Farms Soaps



3) Fall Coffee Fundraiser



4) Holiday wreath sale



# Tis the season for FUNDRAISING:)

## Holiday Fundraising Tips from Daniel!

- Remember you also need spending cash (\$500 suggested)
- Consider a thank you email and a last chance to donate email
- HOLIDAY LETTER ☺



Dear [relative, neighbor, friend, etc.],

As you may already be aware I'm headed to [country/ies] in June of [tour year] as part of an educational overseas tour!! The trip is being organized in collaboration with an internationally renowned program called *Explorica* tours whose motto is "Travel. Learn" In order to earn my way overseas I have already begun both group and individual fundraising efforts such as [various ways you are fundraising—i.e., weekend carwashes, neighborhood yard work, etc.] and have set myself a personal goal of raising [\_\_\_%] of the trip's total cost. That's where you can help☺

This year, rather than giving me a well-chosen holiday present I would ask that you consider making a monetary contribution to my [country/ies] travel fund instead. All

[Closing—i.e., Sincerely, Regards, Love, etc.],

[Signature]

[Name]



## FAQ: Is the price of the trip tax deductible?

No. Explorica is a for profit company, and we are NOT affiliated with the Moscow School District, so these expenses are not tax deductible.



# Other ways to make your travel money



Shoveling Snow



Pet Sitting



Baby Sitting



Spring Cleaning



[Home](#) > [Teachers](#) > [Making travel more accessible](#) > [Fundraising](#) > [Personal fundraising page](#)

## Personal fundraising page

Every paying trip participant receives their very own fundraising page on explorica.com, and the page is generated automatically upon enrollment. Participants can personalize their page, or just use the provided default content, and begin accepting donations immediately. Here's a quick overview of how it works:

### Accessing your fundraising page

As soon as a paying participant enrolls, they can access their personal fundraising page by logging in to their Tour Center and clicking on the "Go to my fundraising page" link in the "Tour Account" module:

▼ **TOUR ACCOUNT** [make a payment >](#) [terms & conditions >](#)

**Remaining Balance: \$1,601.25**

**Payment Plan:** Monthly automated plan (checking account)

**Amount Paid:** \$362.75

**Last Payment Made:** Aug 5, 2016

**Next Payment Due:** Sep 5, 2016

[details >](#)

[Go to my fundraising page >](#)

**MAKING TRAVEL MORE  
ACCESSIBLE**

**fundraising**

personal fundraising page

NEW

# Using your Explorica Fundraising Page

## Help Send Emily to Costa Rica

[Edit Profile >](#)



Hi! I'm going on the adventure of a lifetime with my school. I'm asking for your support to help fund my trip! This tour to Costa Rica will build on the things I'm learning about in my Spanish class, while introducing me to an exciting new destination and culture. Please consider supporting my trip with a donation of any amount. Thank you!

**RAISED \$500** of \$1,000 goal      597 days left

50% Completed

Share by:



[Submit donation](#)

### Learn more about my Explorica Tour



Tour: Costa Rica  
Spring 2018

[TOUR ITINERARY](#) [print itinerary >](#)

[TOUR INCLUDES](#)

### Supporters (4)

\$150 5/10/2018	from <b>Jennifer Reynolds</b> I'm so excited for you, I love Costa Rica! You're going to have a great time!
\$200 5/10/2018	from <b>Lucille Fitzgerald</b> Make memories and take lots of photos for me! Love, Nana
\$50 5/10/2018	from <b>Anonymous</b>
\$100 5/10/2018	from <b>Timothy McKinley</b> Have fun on your trip! Love, Uncle Tim

Follow the online directions and forward this to friends and family to have them help You reach your travel goals!



# Luggage, Cell Phones, and Debit Cards



A debit card from your bank works best.



**Feel free to check out other options!**



Pack **LIGHT!** You will be carrying this around

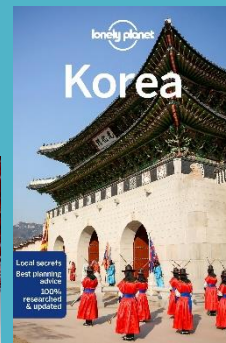
**(Ideally: W 20in × H 14in × D 9 in)**

International phones plans



# Gifts for your Adventurer

- ✓ Money belt
- ✓ Travel wallet with a zipper pouch
- ✓ Carry on luggage (22"-14"-9")
- ✓ Book about our destination
- ✓ Adaptor pack & voltage converters
- ✓ Reusable TSA approved toiletries bag
- ✓ Tri-State or similar gift card
- ✓ "Non smart" watch
- ✓ Light weight and easy dry clothes
- ✓ Scarf for cover up
- ✓ Portable charger
- ✓ Ear buds/headphones
- ✓ Neck pillow/ eye mask
- ✓ Reusable water bottle
- ✓ Travel journal
- ✓ Travel toiletries kit
- ✓ Mini first aid kit
- ✓ Comfortable facemask



# South Korea-Japan 2025– Schedule of meetings/events

- Dec. 11, 2023 1<sup>st</sup> meeting after signing up info about fundraiser #1
- March 25, 2024 2<sup>nd</sup> Meeting, Collect \$50 team building fee and \$100 Gratuity Fee and Info on fundraiser #2
- Sept. 21, 2024 Saturday Team building day #1 / fall fundraisers (9am-1pm at TBD location)
- Dec. 2, 2024 Culture Night & final rooming preferences, roles/expectations, etc. @ 7pm in the MPR
- March 3, 2025 History and travel logistics @ 7pm in the MPR
- May 5, 2025 Pre-travel information @ 7pm in the MPR
- May 17, 2025 Saturday Team Building Day #2 (9am-1pm at TBD location)
- June 16, 2025 Night before departure meeting. Time TBD
- June 17-26, 2025 Our adventure is on!

All meetings and times are subject to change and you will be notified of any changes in advance. Please remember that all travel participants, including traveling adults, are required to attend at least 85% of all team meetings.

# Questions, Comments, and/or Freaking Outs



5-minute adult travelers meeting  
when we finish



## GlobalXpeditions

*Expanding your world view through international travel*

Moscow, Idaho – [globalxpeditions.weebly.com](http://globalxpeditions.weebly.com)



“like” us on  
**facebook**

At “Globalxpeditions”